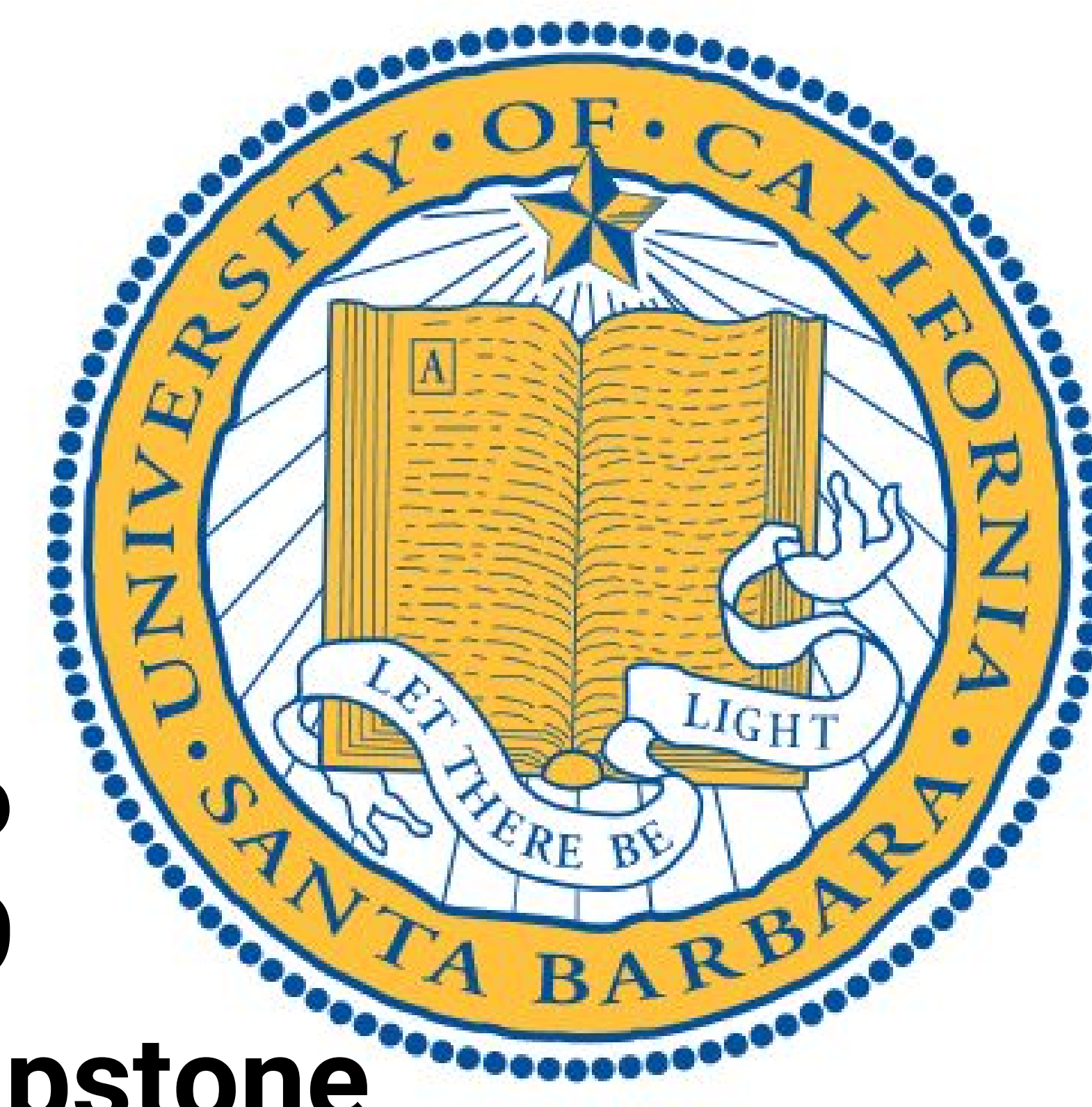




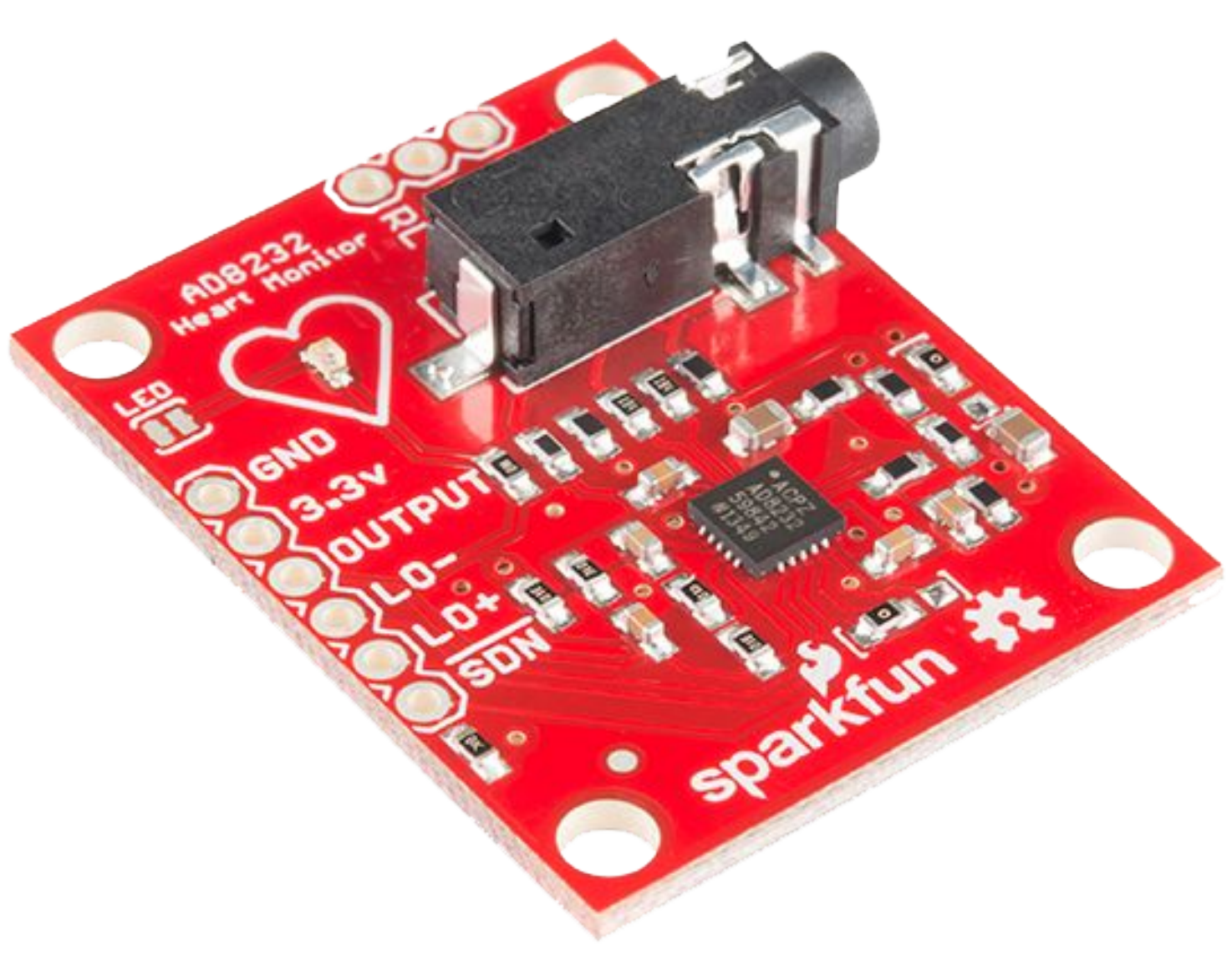
Andrew Villagomez
Jairo Hernandez
Jose Reyes

Purpose

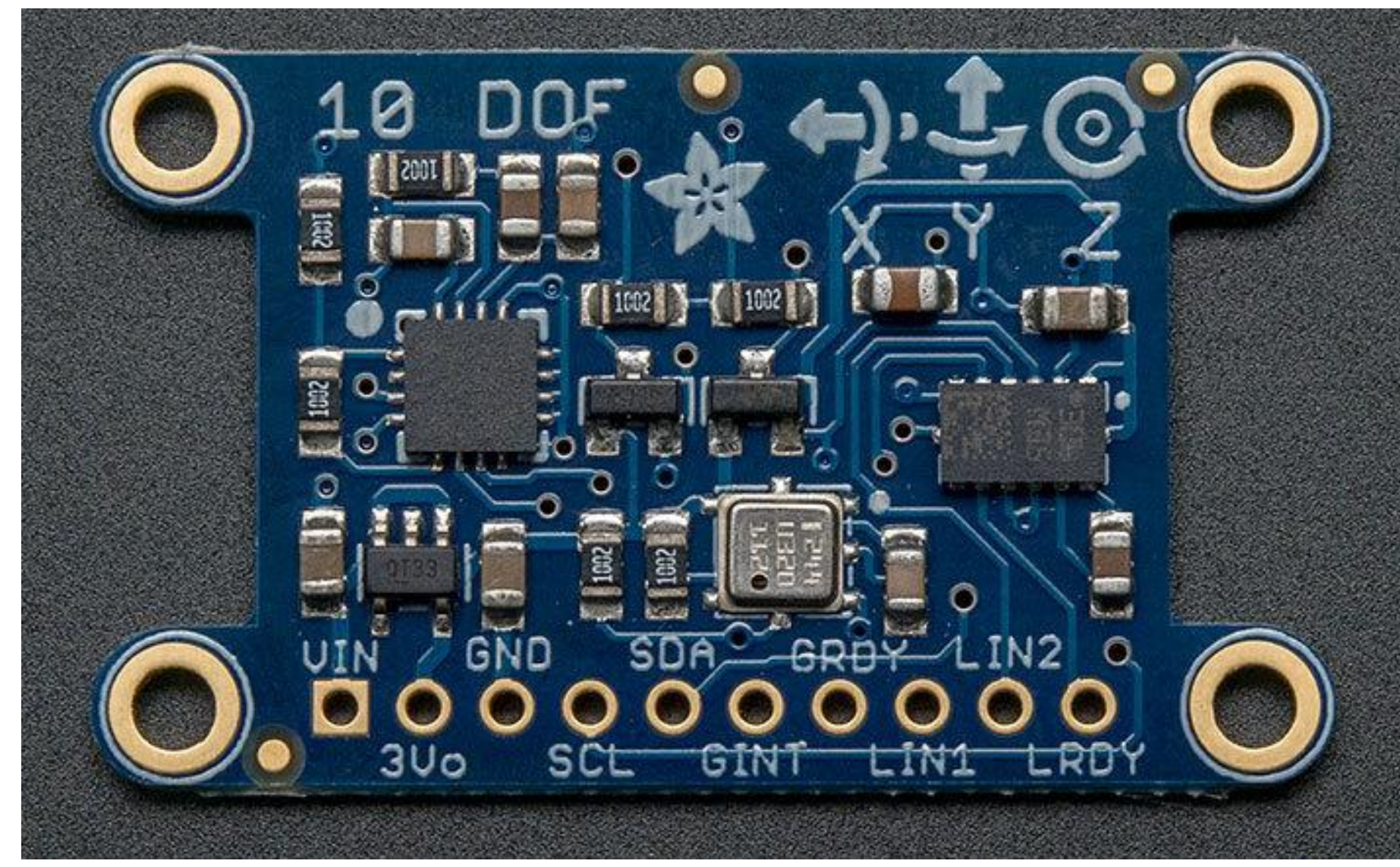
An emergency health monitor system that specializes in getting help to individuals before or as soon as an accident occurs via peripherals and sensors.



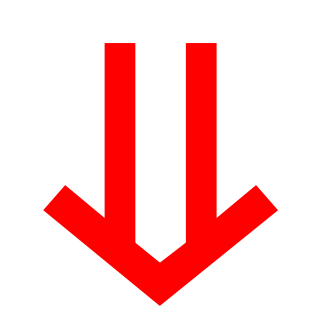
2015-2016
ECE 189
CE Capstone



Heart Rate Sensor



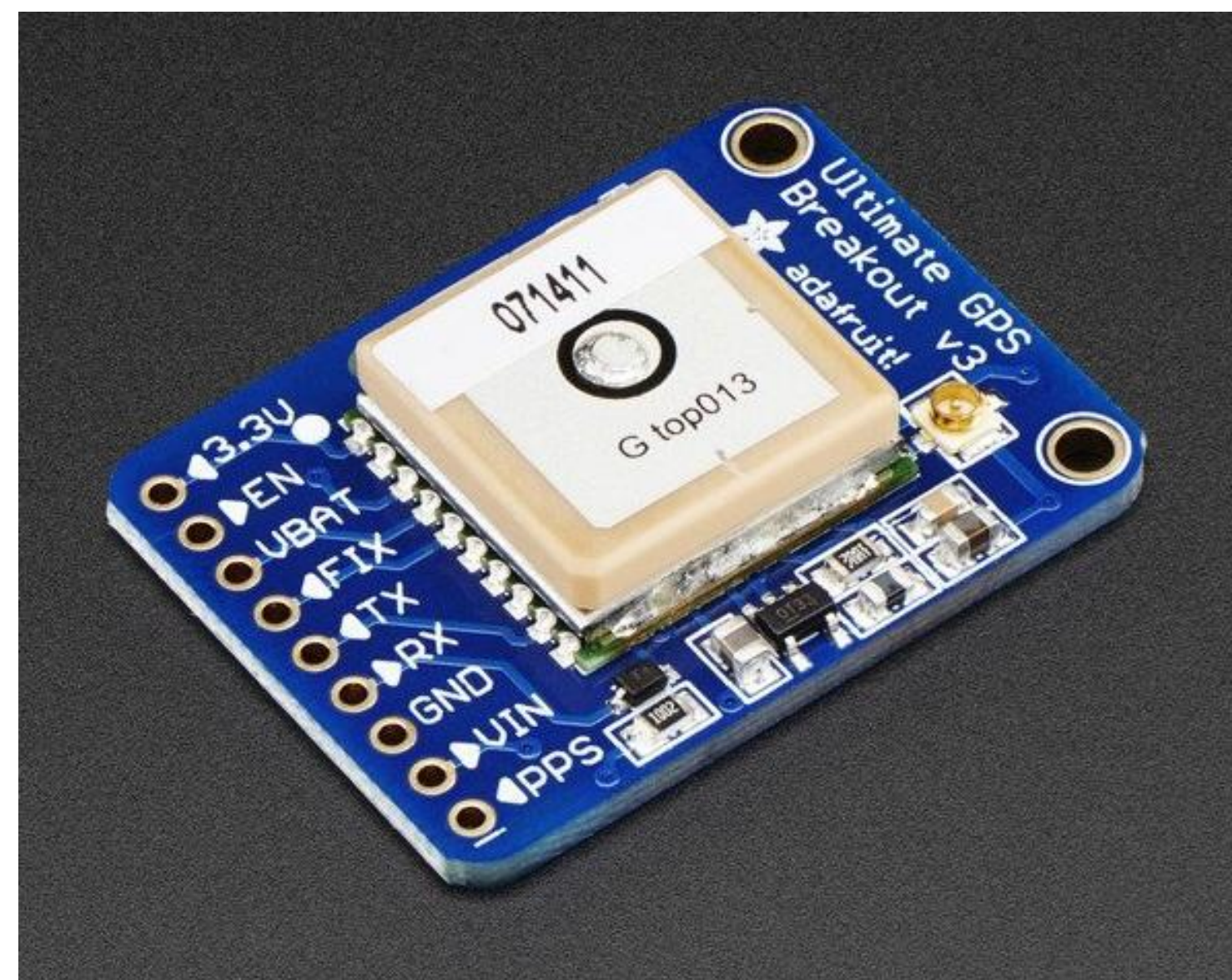
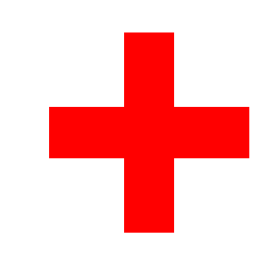
10 D.O.F a.k.a Triple Threat



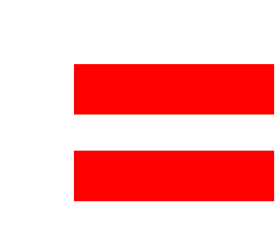
Compares the body's orientation in such situations where there is a dramatic and semi-permanent change in stance/orientation and automatically sends for assistance



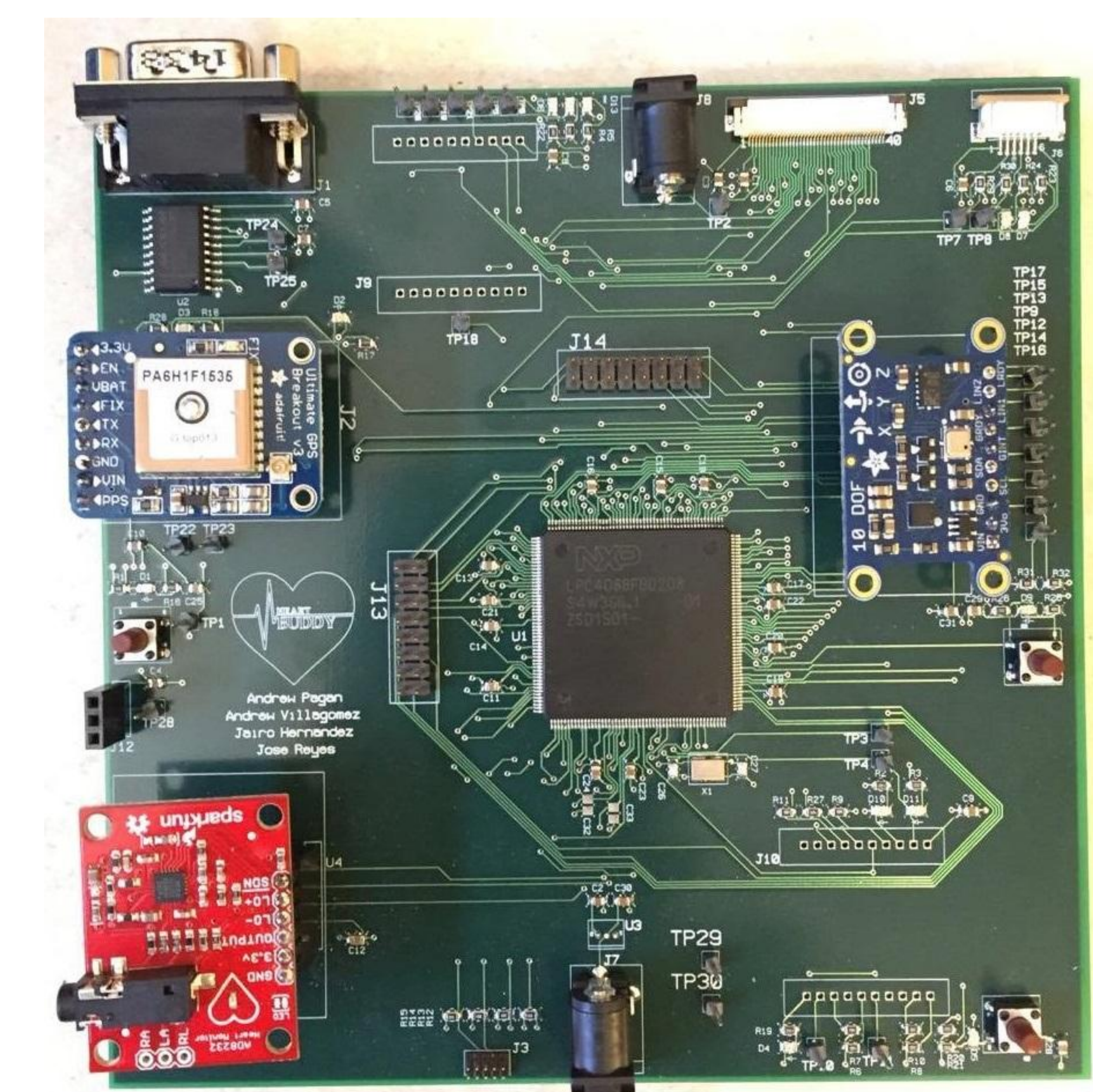
Someone needs...
Heart Buddy!



GPS Module



**NEED
A
MEDIC
NOW**



Circuit Board

A GPS peripheral that achieves a fix location of the portable device every second ready to render its injured owners coordinates.