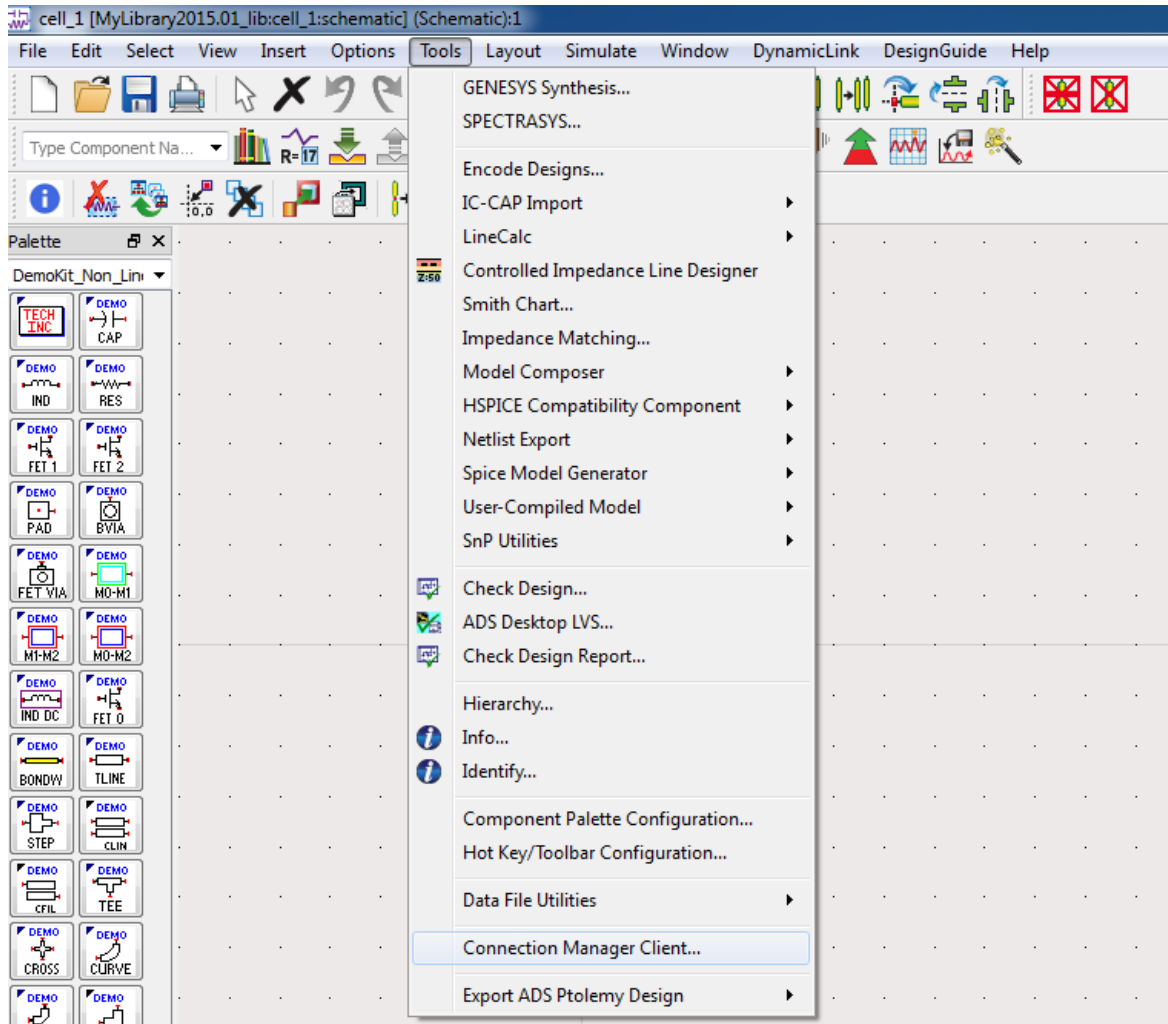


# Retrieving S-Parameter Measurements from Agilent/Keysight Network Analyzers and putting them into an ADS Dataset.

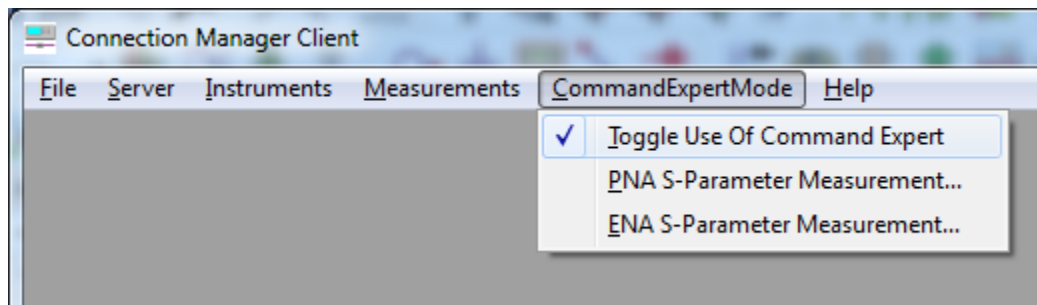
For HP Network Analyzers, this will not work. Instead you should use the GPIB method

---

- 1) Load ADS 2015 (Note: ADS 2013 WILL NOT WORK) and open a schematic window.
- 2) Run 'Tools->Connection Manager Client'

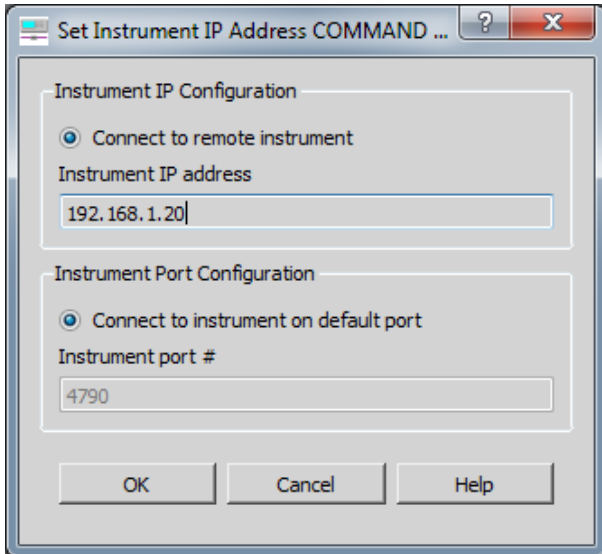


- 3) Toggle 'CommandExpertMode->Toggle Use of Command Expert'

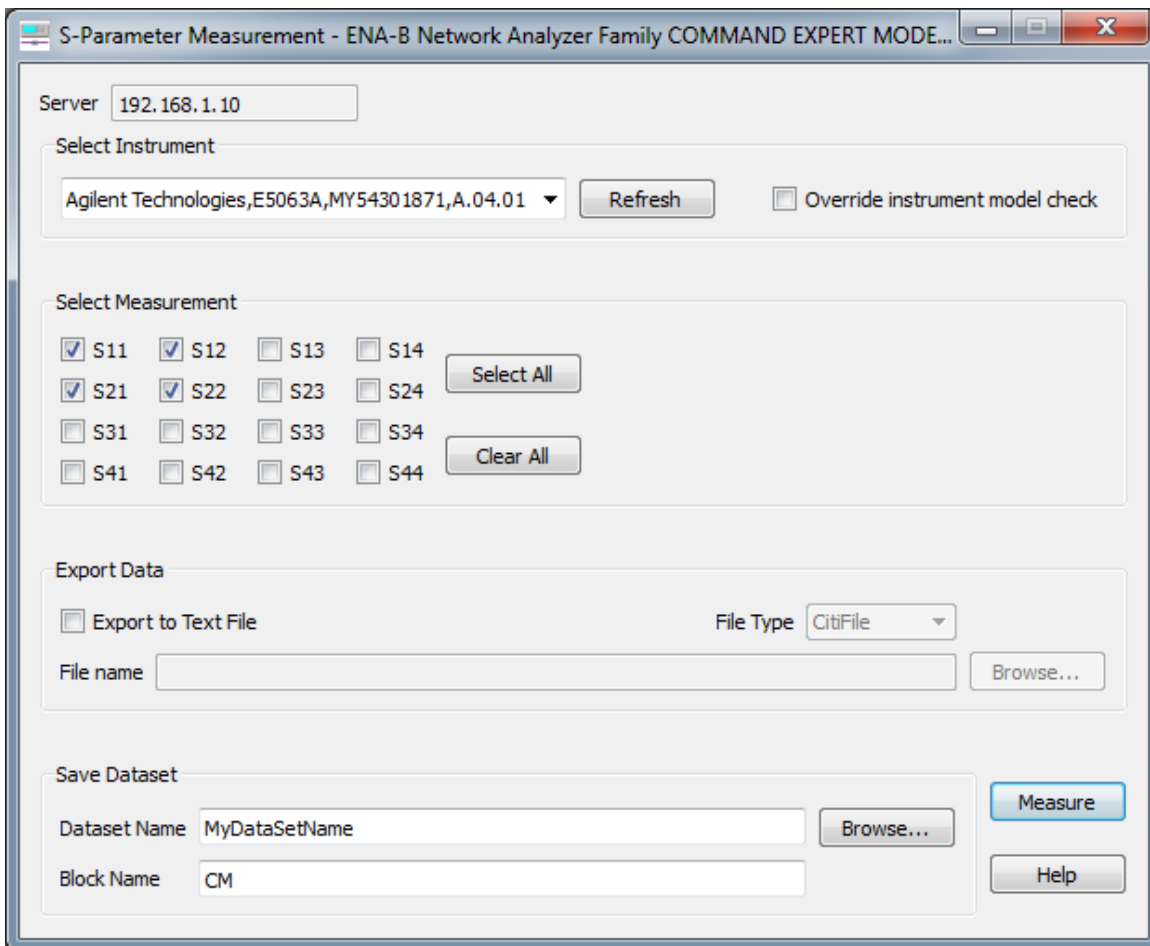


Instructions continued on back...

- 4) Select 'CommandExpertMode->ENA S-Parameter Measurement...'
- 5) Enter the IP Address printed on the label affixed to the Network Analyzer your using, and click OK.



- 6) Choose the S-Parameters you need (by default it will get S11/12 and S21/22)
- 7) Give the Dataset a name and click "Measure"



Note: As you pull in the measurements the Network Analyzer's display will cycle through the different measurements you chose. If you left the default S11/12/21/22 selected, it will end up on S22 which may not have any measurements showing leaving an empty screen on the Analyzer. Go back to the Analyzer and re-select the desired measurement in the top right corner of the main screen if you want to see your measurements on the screen again.