

brightblu.

plug into the endless possibilities of Bluetooth home **otto** automation

Features:

current

Bluetooth pair/connect

Our app allows the user to pair and connect with our device from within our Android app.

On/Off, Full wave dimming

The device allows the user to turn on and off appliances and has the added capability of dimming incandescent lightbulbs.

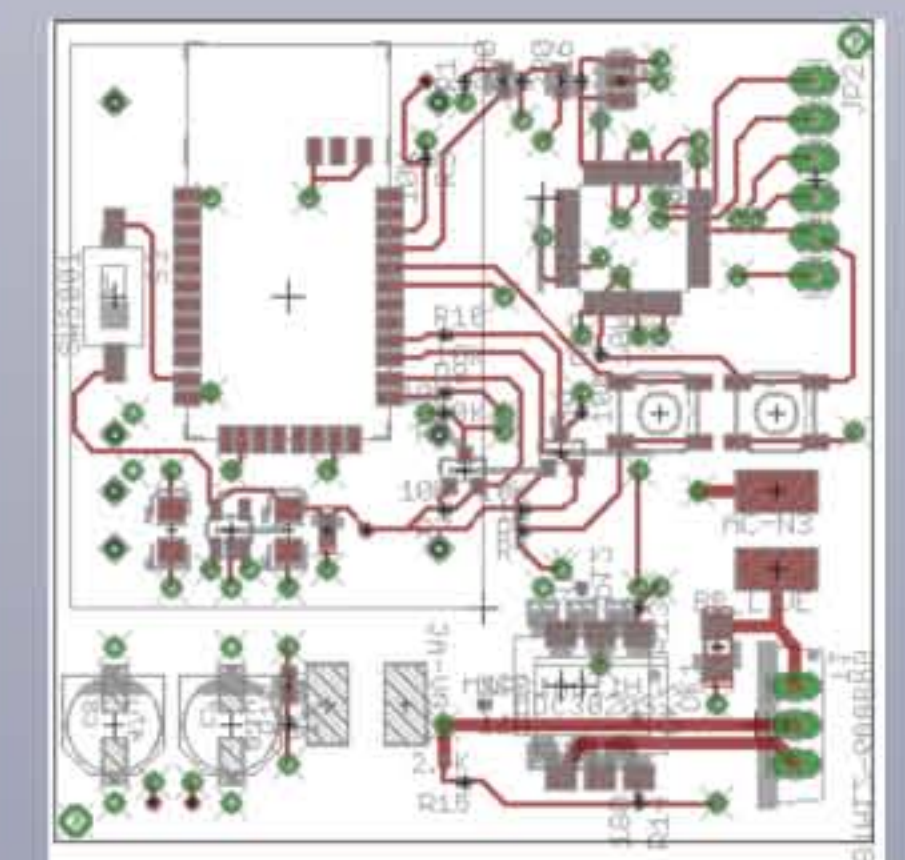
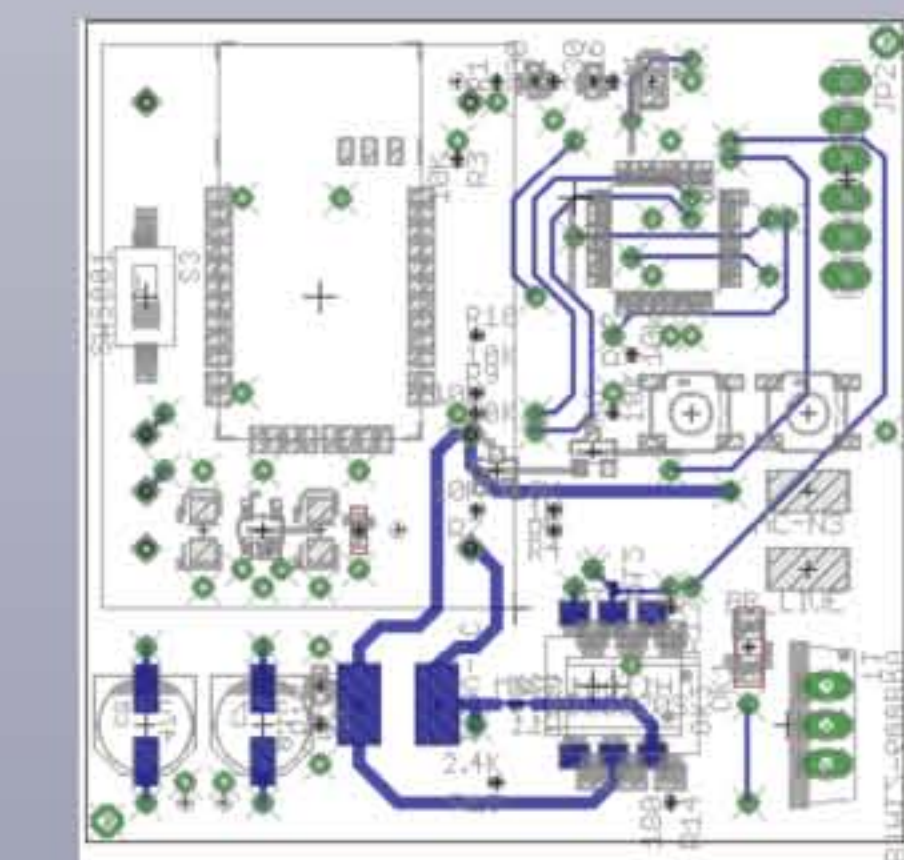
future

Power measurement

The otto will constantly monitor the AC power being consumed by appliances and lights that are plugged into it and push this information to your smartphone over Bluetooth.

Proximity

Using the signal strength between the otto and the smartphone, our app can detect the distance between your smartphone and the otto. This feature can be exploited for a variety of uses including turning on/off appliances when the user leaves their room or house.



bottom

top

PCB layout

otto:

The otto is a plug and play home automation device that allows users to control their lights and appliances through their smartphone over Bluetooth. These plugs are an open-source platform for developers to build iPhone and Android apps for controlling your lights and appliances in a completely unique way. Unlike other home automation devices, the otto is completely customizable, requires no installation, and is affordable on any budget.

software

-Android 2.2

-IOS X

-Arduino

hardware

-ATMega328p microcontroller

-Bluetooth 2.1 +EBR

-Input: 110-140V AC , Output: 120V AC

-Dimming range: 1-100%



Taylor Umphreys

Siddhant Bhargava

Ben Chang

Special Thanks to

Ilan Ben-Yaacov

Jim Honea

Morgan Pattison



Runner up
People's Choice Award

Block Diagram

