

## Test Protocol - Photodetector Module

Product Code: **XPDV2120R-VM-FP**

Part Number: 10 120 041

Serial Number: 95568 **B9.12716**



95568

### Measured Values:

Dark Current: 8.2 nA

PDL: 0.2 dB

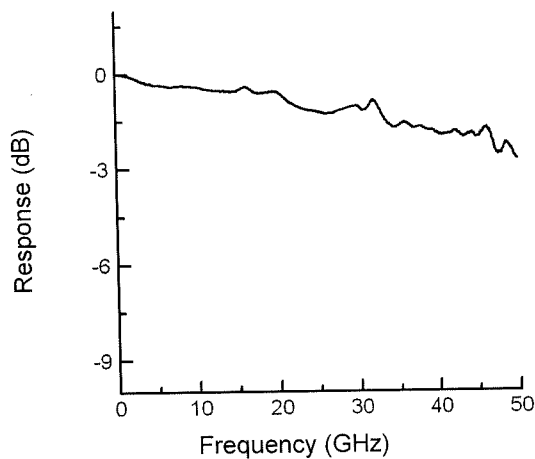
Pulse Width: 9.4 ps (see note 1)

Optical Return Loss: 31.6 dB (1550 nm)

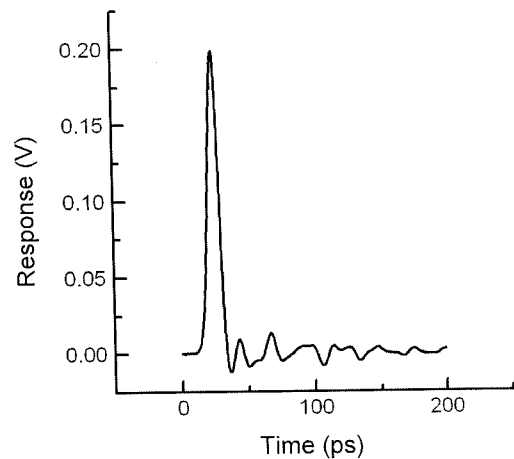
Cut-off frequency: > 50 GHz (see note 2)

Responsivity: 0.64 A/W

### Measured Frequency Response:



### Measured Pulse Response:



### Measurement Conditions:

Bias Voltage: 2.8 V Temperature: 23 °C

### Notes:

- 1) Measured with: 1 ps pulse source, and 7 ps sampling head.
- 2) -3dB point of electrical signal, measured using lightwave component analyzer N4373C.