

Coaxial Frequency Mixer

Level 7 (LO Power +7 dBm) 0.5 to 500 MHz

ZAD-1+
ZAD-1



Maximum Ratings

Operating Temperature	-55°C to 100°C
Storage Temperature	-55°C to 100°C
RF Power	50mW
IF Current	40mA

Coaxial Connections

LO	1
RF	3
IF	2

Features

- low conversion loss, 5.24 dB typ.
- high L-R isolation, 45 dB typ.
- rugged shielded case

Applications

- VHF/UHF
- instrumentation

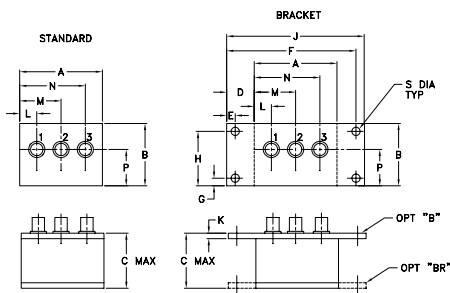
CASE STYLE: M22

Connectors	Model	Price	Qty.
BNC	ZAD-1(+)	\$43.95 ea.	(1-9)
BRACKET (OPTION "B")		\$5.00	(1+)
BRACKET (OPTION "BR")		\$1.50	(1+)

+ RoHS compliant in accordance with EU Directive (2002/95/EC)

The +Suffix identifies RoHS Compliance. See our web site for RoHS Compliance methodologies and qualifications.

Outline Drawing



Outline Dimensions (inch/mm)

A	B	C	D	E	F	G	H
2.25	1.38	1.24	.50	.150	3.100	.138	1.238
57.15	35.05	31.50	12.70	3.81	78.74	3.51	31.45

J	K	L	M	N	P	S	wt
3.25	.10	.40	1.15	1.86	.64	.150	grams
82.55	2.54	10.16	29.21	47.24	16.26	3.81	74.0

Electrical Specifications

FREQUENCY (MHz)	CONVERSION LOSS (dB)				LO-RF ISOLATION (dB)						LO-IF ISOLATION (dB)						
	LO/RF	IF	Mid-Band m	Total Range Max.	L		M		U		L		M		U		
0.5-500	DC-500	5.24	0.10	7.0	8.5	Typ.	Min.	Typ.	Min.	Typ.	Min.	Typ.	Min.	Typ.	Min.	Typ.	Min.
						50	45	45	30	35	25	45	35	40	25	30	20

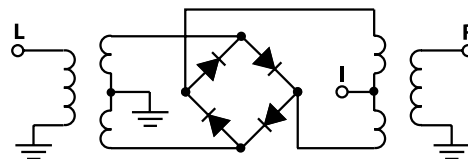
1 dB COMP.: +1 dBm typ.

L = low range [f_1 to $10 f_1$] M = mid range [$10 f_1$ to $f_2/2$] U = upper range [$f_2/2$ to f_2]
m = mid band [$2f_1$ to $f_2/2$]

Typical Performance Data

Frequency (MHz)	Conversion Loss (dB)	Isolation L-R (dB)	Isolation L-I (dB)	VSWR RF Port (:1)	VSWR LO Port (:1)
0.50	30.50	7.29	>67.00	>67.00	1.21
1.00	31.00	6.89	>67.00	62.73	1.03
2.00	32.00	6.49	>67.00	61.28	1.02
5.00	35.00	6.01	>67.00	60.55	1.06
10.00	40.00	5.99	>67.00	59.37	1.10
20.00	50.00	6.02	>67.00	59.08	1.13
32.73	62.73	5.96	59.27	57.92	1.15
50.00	80.00	5.91	56.01	56.08	1.19
64.95	94.95	5.87	53.83	54.11	1.23
100.00	70.00	5.81	49.90	49.45	1.29
161.63	131.63	5.84	44.60	43.60	1.35
200.00	170.00	5.99	41.47	40.82	1.42
226.08	196.08	5.95	40.62	39.96	1.49
258.31	228.31	5.89	39.44	37.84	1.56
306.65	276.65	5.99	37.26	36.42	1.65
354.99	324.99	6.23	34.94	34.34	1.74
403.33	373.33	6.32	33.70	33.77	1.81
451.66	421.66	6.68	33.66	33.23	1.93
483.89	453.89	7.17	34.17	34.46	2.00
500.00	470.00	7.25	34.51	34.41	2.03

Electrical Schematic



Mini-Circuits
ISO 9001 ISO 14001 CERTIFIED

ALL NEW
minicircuits.com

P.O. Box 350166, Brooklyn, New York 11235-0003 (718) 934-4500 Fax (718) 332-4661 For detailed performance specs & shopping online see Mini-Circuits web site



The Design Engineers Search Engine Provides ACTUAL Data Instantly From MINI-CIRCUITS At: www.minicircuits.com

RF/IF MICROWAVE COMPONENTS

REV. A
M98898
ZAD-1+
DJ/TD/CP
070319
Page 1 of 2

Performance Charts

